



---

**X-Author for Excel February 2017 Patch 3 Release Notes**

26 May 2017

# Table of Contents

<b>Installation Components</b>	<b>5</b>
<b>Minimum Supported Versions</b>	<b>6</b>
<b>Feature Summary</b>	<b>7</b>
<b>Sync App</b>	<b>7</b>
To view and sync missing or inaccessible objects	7
To view and sync missing or inaccessible fields	8
To view and sync field data types	9
<b>Resolved Issues</b>	<b>12</b>
<b>Known Issues</b>	<b>13</b>

## Release Notes

Apttus Release Notes contain the following information about this release:

- [Installation Components](#): that are required to upgrade to this release.
- [Feature Summary](#): high-level descriptions of new features and enhancements to existing features, with links to Get Started topics to help you set up and use the new feature or enhancement.
- [Resolved Issues](#): A list of customer issues resolved in this patch.
- [Known Issues](#)

# Installation Components

The following packages and dependent packages are required to upgrade to this release. These are the *minimum* required versions; later versions are also supported. The packages marked as **(New)** are new packages for this release and must be installed to upgrade to this version.

	Product	Version	Product Edition
Salesforce Installed Packages	Apttus X-Author For Excel	4.40.1	Power Admin Enterprise Essentials Presto
	Apttus X-Author Designer for Excel	1.9	Power Admin Enterprise Essentials Presto
	Apttus X-Author for Excel Document Generation	1.0	Presto
	Apttus X-Author for Excel (Power Admin)	1.0	Power Admin
Microsoft Office Add-in	Apttus X-Author for Excel: Runtime Only (English) <b>(New)</b>	5.1.0523	Power Admin Enterprise Essentials Presto
	Apttus X-Author Designer + Runtime Add-in (English) <b>(New)</b>	5.1.0523	Power Admin Enterprise Essentials Presto
Microsoft Office Versions	2016 2013 2010		
Supported Operating System	Windows 10 Windows 8.1 Windows 8 Windows 7		

## Minimum Supported Versions

Windows Version	Microsoft Office Versions
Windows 7	Office 2007, 2010, 2013
Windows 8, 8.1	Office 2007, 2010, 2013, 2016
Windows 10	Office 2007, 2010, 2013, 2016

# Feature Summary

The following features are new to X-Author for Excel in this release.

- [Sync App](#)

## Sync App

X-Author for Excel Designer can now display missing objects, field and mismatched data types used in an app when they do not match corresponding data in Salesforce. You can use the new "Sync App" action from the Admin section of the X-Author Designer ribbon to review and correct discrepancies between your app and Salesforce data.

Using Sync App, you can view and correct the following data mismatches between your app and Salesforce:

- **Objects** – View all objects in your app that do not match objects in the connected Salesforce org. You must manually remove these objects from your app or add or make them available in Salesforce.
- **Fields** – View all fields in your app present in one or more Display Maps, Save Maps or Search Filters that do not match objects in the connected Salesforce org. Use Sync App to select and remove these fields from Display Maps and Save Maps. In most cases you must manually remove fields from your search and query filters.
- **Field Data Types** – View all mismatched field data types that exist in your app. Use Sync App to correct all mismatched data types in your app with data types from Salesforce.
- **Picklists** – Review the total number of Picklist fields (not values) synced between the app and Salesforce (based on Salesforce data) in the Summary. No user intervention is required.

This feature replaces the previous **Validate** feature in the ribbon. With Sync App, you have more control to validate objects and fields and to make corrections when there are differences between your app data and Salesforce org.

### Missing/Inaccessible Objects and Fields

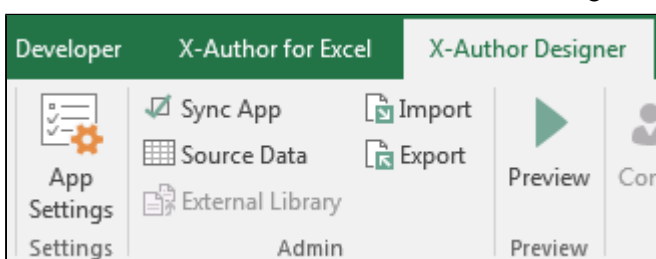
Keep in mind that when you sync apps, some mismatches may be displayed because your user profile or individual permissions do not allow you to access them. **Before taking any action based on the Sync App dialog, check with your administrator to make sure that no permission issue exists** that is preventing you from accessing objects or fields used in the app.

### Note

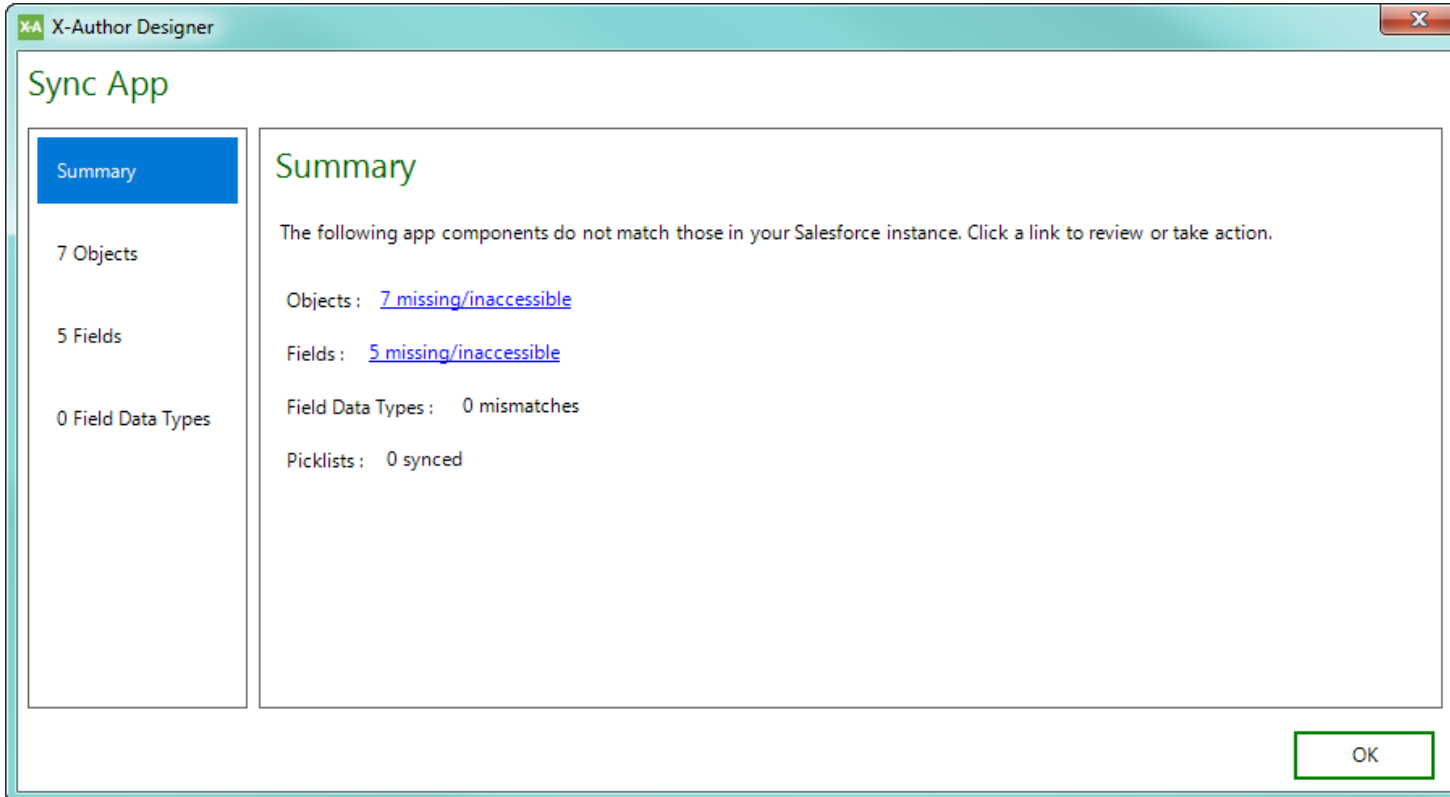
The Sync App feature is not compatible with Quick Apps.

## To view and sync missing or inaccessible objects

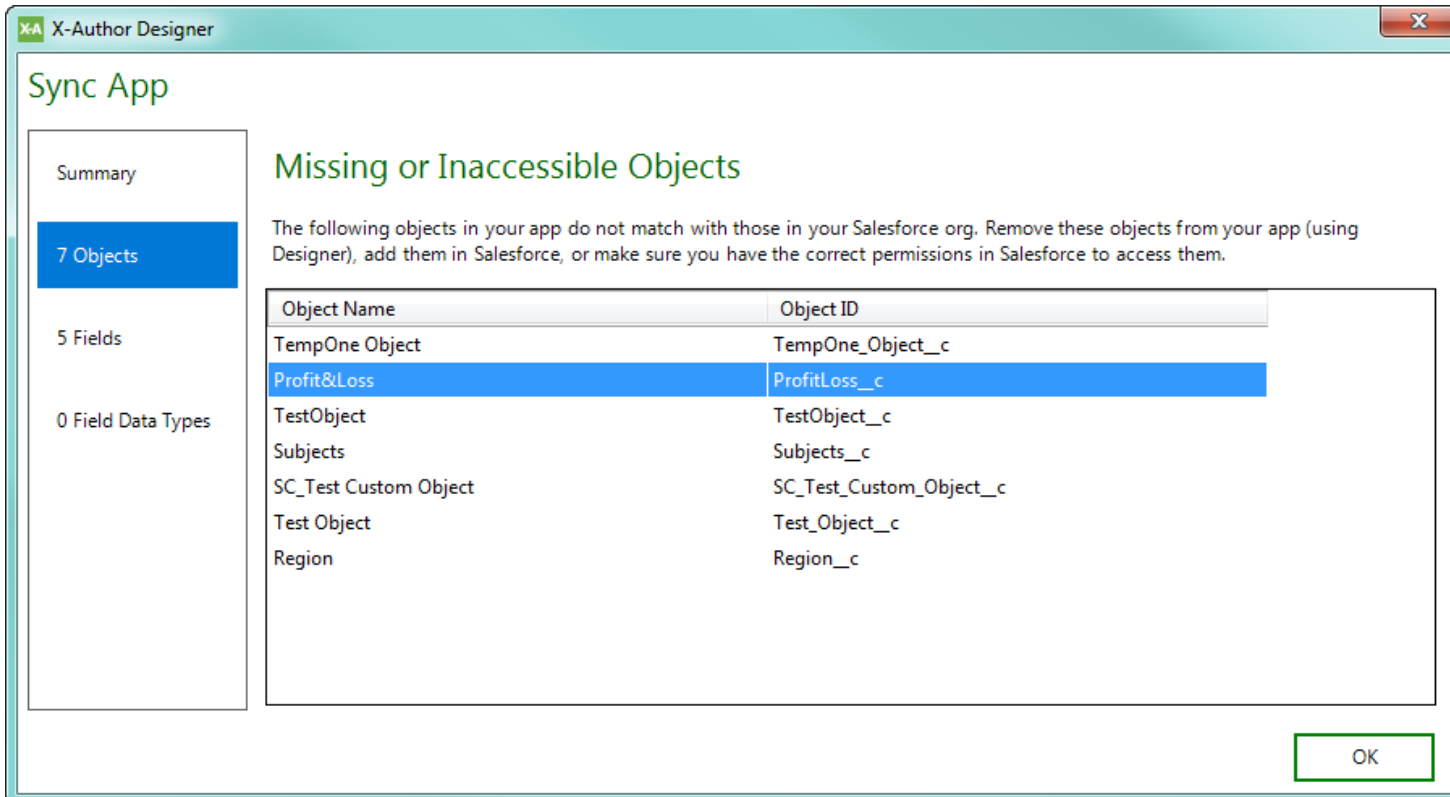
1. From the X-Author Designer ribbon, open the app you want to sync.
2. From the Admin section of the X-Author Designer ribbon, click **Sync App**.




- Review the Sync App summary. Click the link next to Objects in the Summary or on **# Objects** in the sidebar.



- Review the Missing or Inaccessible Objects screen. This screen displays a list of Object Names and Ids that exist in your app but do not match objects in the connected Salesforce org (either because they do not exist or you do not have access). The total number of object mismatches is displayed in the Sync App dialog sidebar (for example, "2 Objects").



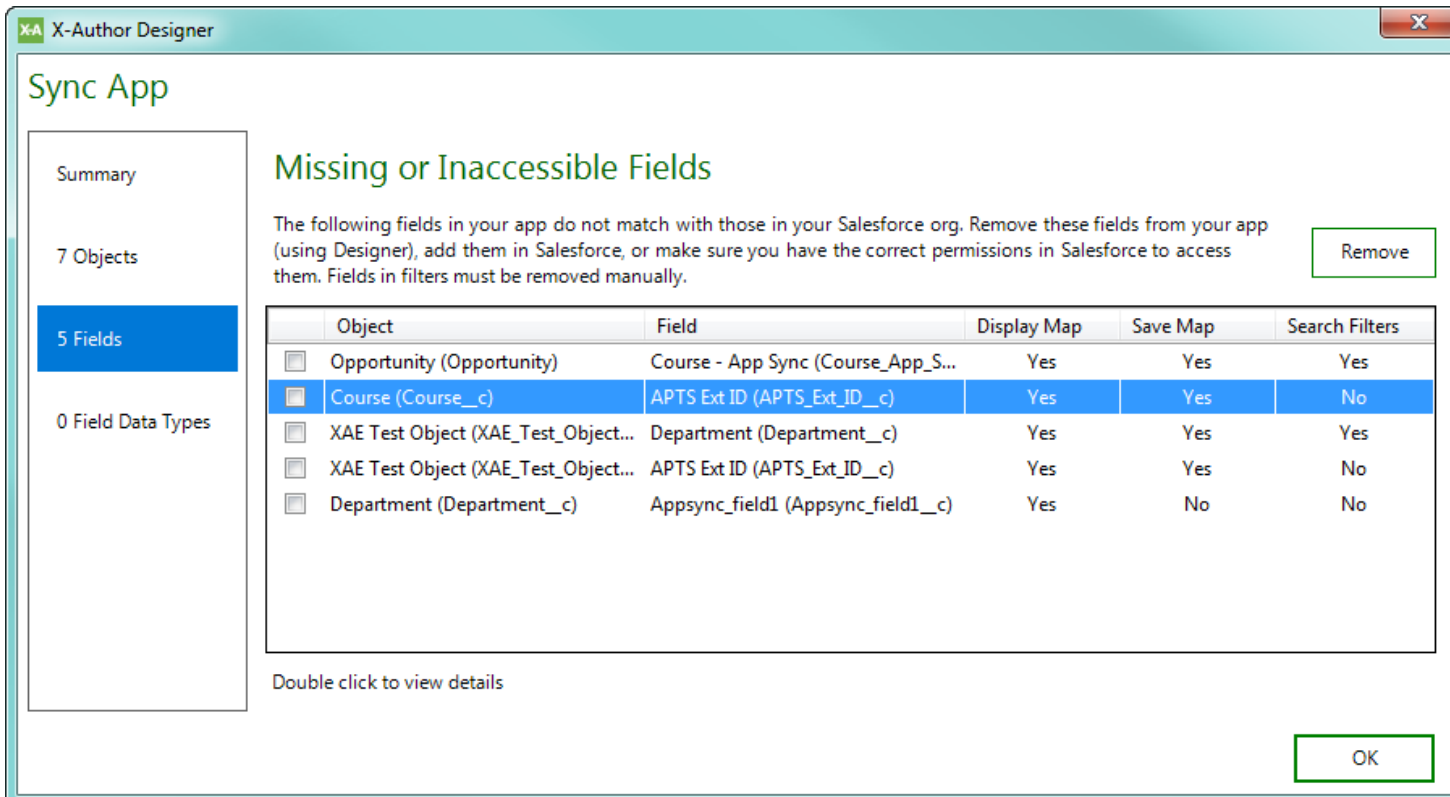
- To sync your app with Salesforce, you must **manually remove the objects from your app** (using Salesforce Objects) or add them in Salesforce. If you determine that an object was displayed due to a permissions issue, a Salesforce administrator must modify permissions for the specified object.

 It is strongly advised to sync fields before manually removing any objects from your app, as fields from the object you want to remove may be used in Display Maps, Save Maps or Search and Query filters (see below).

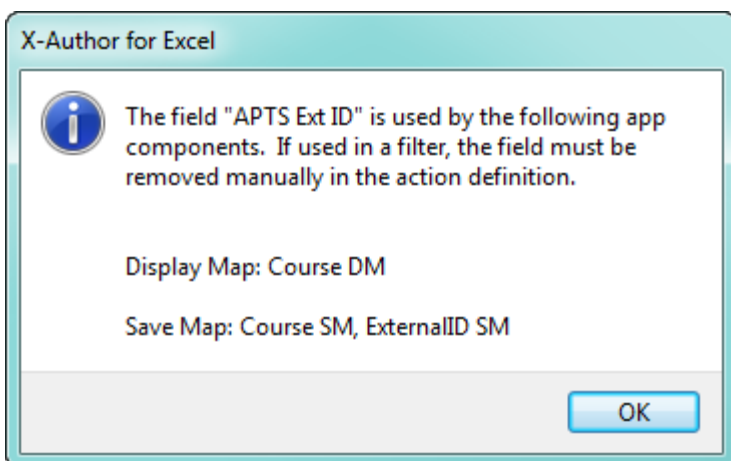
**To view and sync missing or inaccessible fields**

- From the X-Author Designer ribbon, open the app you want to sync.
- From the Admin section of the X-Author Designer ribbon, click **Sync App**.

- Review the Sync App Summary. Click the link next to Fields in the Summary or on **# Fields** in the sidebar.



- Review the list of missing or inaccessible fields. This screen displays all of the fields that exist in your app that do not match a field in the connected Salesforce org for a given object. For each field, the Display Map, Save Map and Search Filters columns indicate whether the field is used in one or more Display Maps, Save Maps or Search/Query Filters, respectively.
- Double-click on a row to display a pop-up and to view all areas of the App with that field.



- If you decide to remove any of the fields in the list from your app, click one or more check boxes corresponding to the fields you want to remove and click **Remove**.

**!** Fields used in Search & Select and Query filters are only removed in this way if the filter type is "User Input" and there is no Filter Logic defined. In all other cases, you must go to the filter and manually remove it from your app.

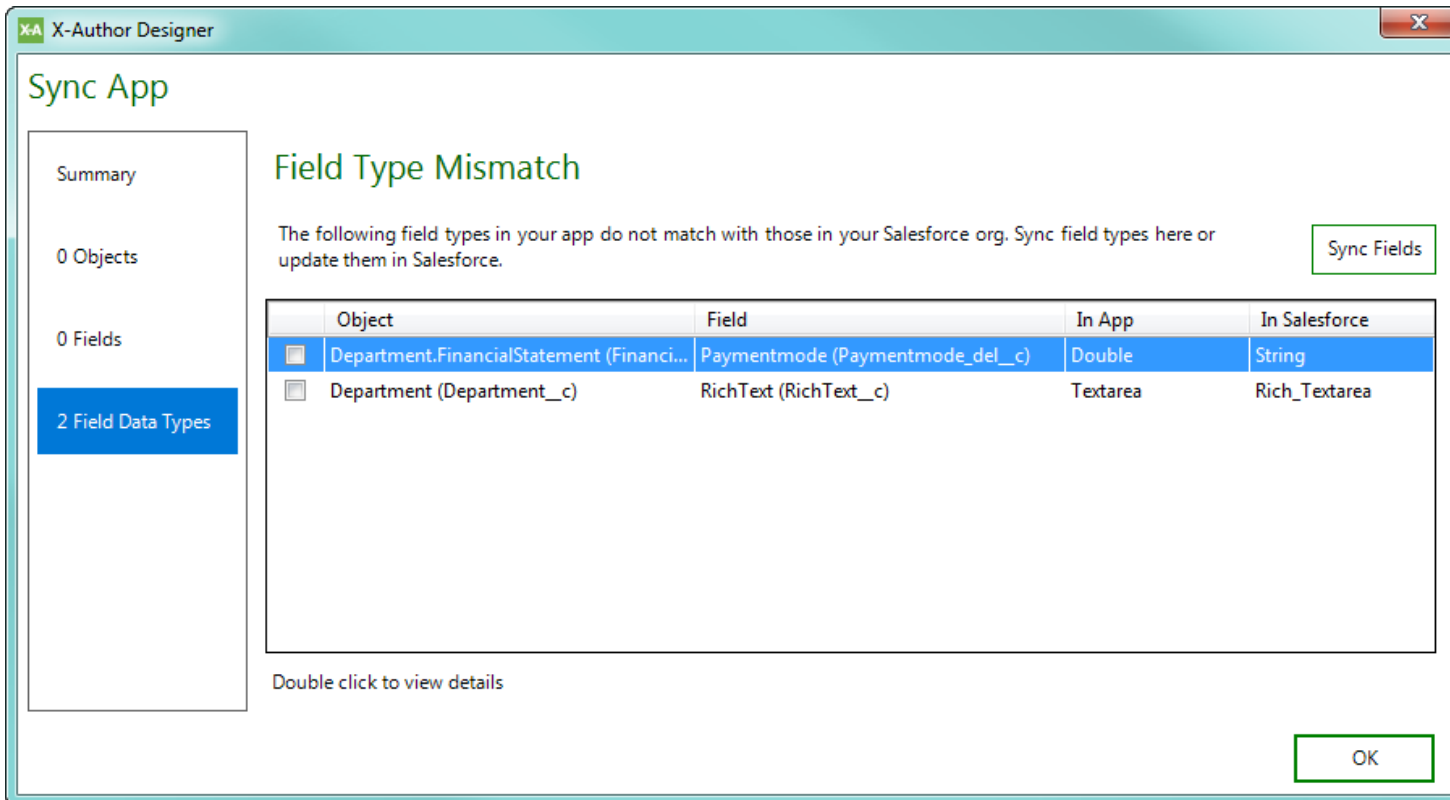
- Click **OK** to close the Sync App dialog.
- Click **Save App** to save the changes you made to your app.

### To view and sync field data types

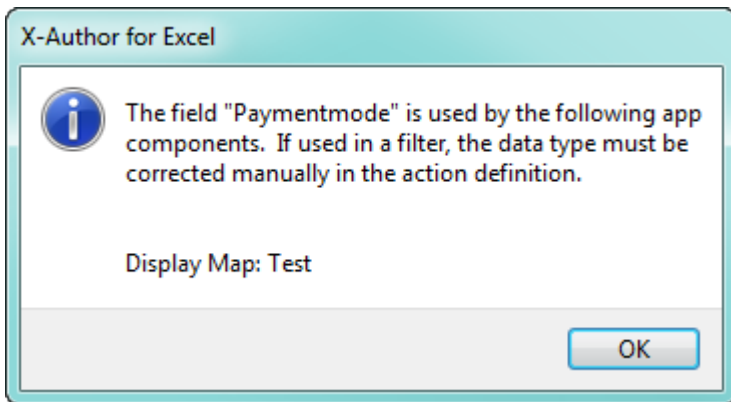
- From the X-Author Designer ribbon, open the app you want to sync.
- From the Admin section of the X-Author Designer ribbon, click **Sync App**.



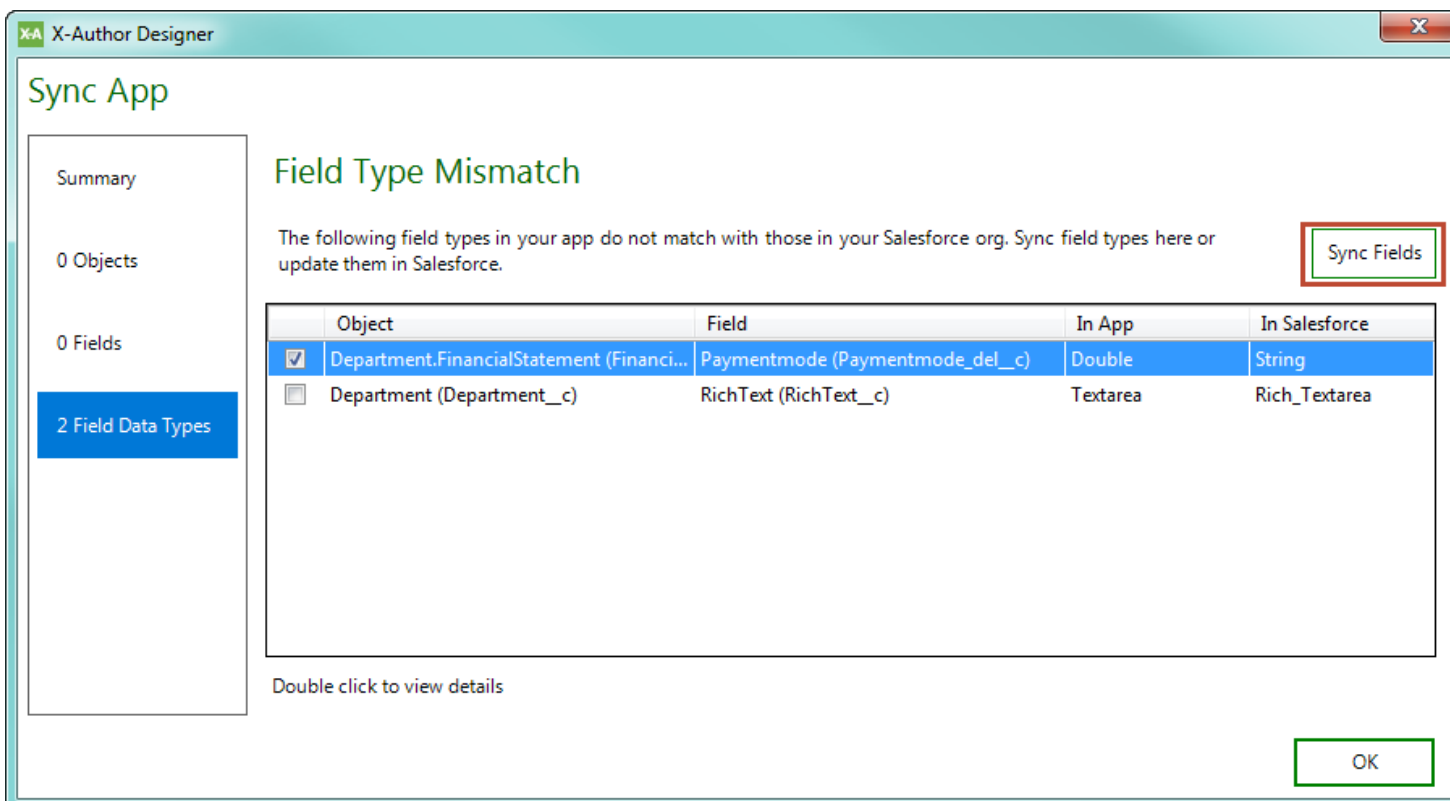
- Review the Sync App Summary. Click the link next to Field Data Types in the Summary or on **# Field Data Types** in the sidebar.



- Review the list of mismatched field data types.
- Double-click on a row to display a pop-up and to view all areas of the App with that field.



- To sync incorrect data types with the data types in Salesforce, select on or more check boxes and click **Sync Fields**.



- Click **OK** to close the Sync App dialog.

8. Click **Salesforce Objects** to verify that the field types have been properly synced.

Field Id	Field Name	Data Type
<input checked="" type="checkbox"/> APTS_EXT_ID__c	APTS_EXT_ID	String
<input checked="" type="checkbox"/> Department__c	Department	Lookup
<input checked="" type="checkbox"/> Name	FinancialStatement Name	String
<input checked="" type="checkbox"/> Flag__c	Flag	Picklist
<input checked="" type="checkbox"/> Paymentmode_del__c	Paymentmode	String
<input checked="" type="checkbox"/> Id	Record ID	String
<input checked="" type="checkbox"/> SyncFieldTest__c	SyncFieldTest	Boolean
<input checked="" type="checkbox"/> TotalExpense__c	TotalExpense	Double
<input type="checkbox"/> Attachment	Attachment	Attachment
<input type="checkbox"/> CreatedById	Created By	Lookup

9. Click **Save App** to save your changes.

**Best Practice**

After you have performed all Sync App operations, choose Sync App again to double-check that there are no more mismatches or discrepancies to validate against Salesforce.

## Resolved Issues

The following table represents resolved issues for the release dated: 25 May, 2017

Case Number	Description	Apttus Internal Case Number
208743	Type ahead functionality stopped working on the latest version of X-Author for Excel. This issue has been resolved.	AB-2761
	Favorite filter had an issue with <code>IN</code> operator. When you had more than one value in user input, it clubbed the values. This issue has been resolved.	AB-2820

# Known Issues

The following table represents known issues:

Apttus Internal Case Number	Issue
<b>X-Author Excel 5.1.0523</b>	
AB-2870	In X-Author for Excel, the objects of previously opened app appear in newly created data migration app.

## Apttus Copyright Disclaimer

Copyright © 2017 Apttus Corporation (“Apttus”) and/or its affiliates. All rights reserved.

No part of this document, or any information linked to or referenced herein, may be reproduced, distributed, or transmitted in any form or by any means, including photocopying, recording, or other electronic or mechanical methods, without the prior written consent of Apttus. All information contained herein is subject to change without notice and is not warranted to be error free.

This document may describe certain features and functionality of software that Apttus makes available for use under a license agreement containing restrictions on use and disclosure and are protected by intellectual property laws. Except as expressly permitted in your license agreement or allowed by law, you may not, in any form, or by any means, use, copy, reproduce, translate, broadcast, modify, license, transmit, distribute, exhibit, perform, publish, or display any part of the software. Reverse engineering, disassembly, decompilation of, or the creation of derivative work(s) from, the software is strictly prohibited. Additionally, this document may contain descriptions of software modules that are optional and for which you may not have purchased a license. As a result, your specific software solution and/or implementation may differ from those described in this document.

**U.S. GOVERNMENT END USERS:** Apttus software, including any operating system(s), integrated software, any programs installed on the hardware, and/or documentation, delivered to U.S. Government end users are “commercial computer software” pursuant to the applicable Federal Acquisition Regulation and agency-specific supplemental regulations. As such, use, duplication, disclosure, modification, and adaptation of the programs, including any operating system, integrated software, any programs installed on the hardware, and/or documentation, shall be subject to license terms and license restrictions applicable to the programs. No other rights are granted to the U.S. Government.

Neither the software nor the documentation were developed or intended for use in any inherently dangerous applications, including applications that may create a risk of personal injury. If you use this software or hardware in dangerous applications, then you shall be responsible to take all appropriate fail-safe, backup, redundancy, and other measures to ensure its safe use. Apttus and its affiliates disclaim any liability for any damages caused by use of this software or hardware in dangerous applications.

Apttus and X-Author are registered trademarks of Apttus and/or its affiliates.

The documentation and/or software may provide links to Web sites and access to content, products, and services from third parties. Apttus is not responsible for the availability of, or any content provided by third parties. You bear all risks associated with the use of such content. If you choose to purchase any products or services from a third party, the relationship is directly between you and the third party. Apttus is not responsible for: (a) the quality of third-party products or services; or (b) fulfilling any of the terms of the agreement with the third party, including delivery of products or services and warranty obligations related to purchased products or services. Apttus is not responsible for any loss or damage of any sort that you may incur from dealing with any third party.

For additional resources and support, please visit <https://apptusportal.force.com/community>.